

# VertiCoil™

## Edge Support Encasement



### Custom engineered profile and formulation designed exclusively for VertiCoil™ innersprings.

#### Creates a uniform edge

- Smooth, clean lines along sides and ends
- Allows manufacturers to easily produce a supportive edge
- Supported encased mattress
- Creates a full sleep surface, edge to edge

#### Closed cell foam component

- No moisture absorption
- Mold and mildew resistant
- No odor absorption
- Will not yellow

#### Clean product in manufacturing

- No glue needed to produce the encasement
- No dust

### Reduces Costs

#### Inventory

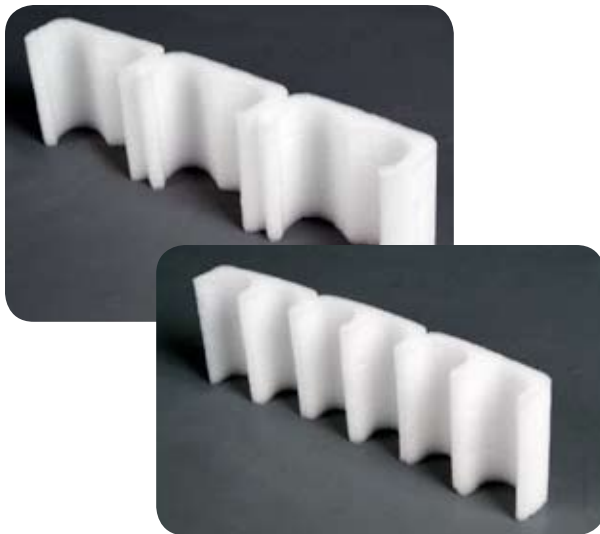
- Packaged efficiently by size
- Color coded labels for easy identification

#### SKU reduction

- Full length support for each edge vs. multiple profiles
- No glue inventory needed

#### Manufacturing

- Inserts quickly
- Lightweight



[www.leggett.com](http://www.leggett.com)

Carthage, Missouri  
417-358-4095



**Flex-O-Lators**

Division of *Leggett & Platt*  
INCORPORATED